

产品型号介绍

Model Introduction >>

80 ED (Q) L 185 S C

特殊要求:
Special requirement:

根据客户的需求特殊定制，如材质、机封类型、电机参数等 we can customize the machine according to our customer's material, type of mechanical seal and motor's parameters.

电机相数或防爆类型:
Motor classification:

电机相数或防爆类型: S- 三相; D- 单相; B- 防爆
Motor classification: S-Three Phase、D-Single Phase、B-anti explosion

电机功率:
Motor power:

04:0.55KW; 07:0.75KW; 11:1.1KW;15:1.5KW; 22:2.6KW; 30:3KW;
55:5.5KW; 75:7.5KW; 110:11KW; 150:15KW; 185:18.5KW; 220:22KW;
300:30KW

联接类型:
Connection Type:

联接类型: 普通螺纹联接、F- 法兰连接、L- 联轴器型、C- 磁力驱动型
Connection Type: normal threaded connection, F-flange connection, L-coupling connection, C- magnetic drive type

系列号:
Series Number:

系列号: ED、EDQ、EDW 按照不同的用途来分类
Series Number: ED、EDQ、EDW classified by different applications.

进口直径:
Inlet Diameter:

进口直径系列标准 (Diameters of Inlet of Different Models):
15、20、25、32、40、50、65、80
相对应的出口标准 (Diameters of Outlet of Different Models):
10、15、20、25、32、40、50、65



选型指南

Selection guide >>

流量选择：从0.3m³/h—60m³/h共8款泵型可供选择。
Flow selection: 8 pump types from 0.3m³/h—60m³/h

材质选择：304SS, 316SS, 双相不锈钢, 哈氏合金, 钛合金
Material selection: 304SS, 316SS, duplex stainless steel, hastelloy, titanium alloy

结构选择：分为一体式和联轴器式。
Structure selection: closed couple type and coupling type.

选型须知：为了能提供给客户完全适合需求的产品，在订购前请确认以下事项：
Selection instructions: In order to provide customers with products that are perfectly suited to their needs, please confirm the following before ordering:

机封选择：碳化硅、无压烧结碳化硅、陶瓷、聚四氟乙烯、氟橡胶、也可定制双端面机封带冲洗系统。

Machine seal selection: silicon carbide, pressureless sintered silicon carbide, ceramic, PTFE, fluoro rubber, can also be customized double-face machine sealing and rinsing system.

序号 SN	项目 Item	内容 Description
1	应用 Application	所用行业、区域等；是否涉及防爆区 Industries, regions, etc. used; whether it involves explosion-proof areas
2	介质 Medium	按种类、黏度、温度、酸碱度、杂质含量等填写 Fill in by type, viscosity, temperature, pH, impurity content, etc.
3	泵的规格 Specification	扬程、流量 Head, flow
4	电机规格 Motor Specification	功率、电压、频率、相数、等级等 Power, voltage, frequency, phase, grade, etc.
5	连接方式 Connection method	法兰连接、螺纹连接 Flange connection, threaded connection
6	其它 other	噪音、铭牌、振动等 Noise, nameplate, vibration, etc.

了解工况后，请根据性能曲线选择合适的泵型，性能曲线是在 20℃清水正常流速的状态下测试生成的，所以选型时务必要考虑液体的比重、黏度、密度不同而产生的变化；泵的特性受连接配管的影响很大，连接管道时过长或接头过多会使扬程的损失很大，所以在设计管路时，尽可能的减少连接管的长度和接头的使用。

After understanding the working conditions, please select the appropriate pump type according to the performance curve. The performance curve is tested under the condition of 20 ° C normal water flow rate. Therefore, it is necessary to consider the changes in the specific gravity, viscosity and density of the liquid when selecting the type; The characteristics of the pump are greatly affected by the connecting piping. If the piping is too long or the joints are too much, the loss of the head will be large. Therefore, when designing the piping, the length of the connecting pipe and the use of the joint should be reduced as much as possible.

总扬程 = 全扬程（吸入扬程 + 输出扬程）+ 损失扬程
Total lift = all lift (inhalation lift + output lift) + loss lift

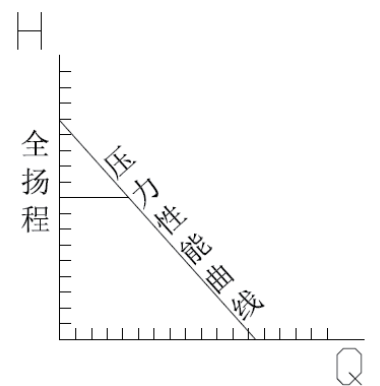
1、本产品目录的性能预想曲线是以水为准，即粘度 = 1mm²/s, 比重 = 1。
The performance prediction curve of this catalogue is based on water, ie viscosity = 1mm²/s, specific gravity = 1.

2、实际全扬程 = 吸入扬程 + 输出扬程。
Actual full lift = suction head + output head.

3、曲线中最高扬程为电机的动力超载界限，长期超压运行会造成电机烧坏。
The highest lift in the curve is the power overload limit of the motor. Long-term overload operation will cause the motor to burn out.

弯管接头等管损非常大，所以尽量减少使用弯管接头，特别是直角弯头，在管路的设计上应注意以下事项：

- 1、尽可能缩短吸入管路，使泵靠近液面，以减少泵在吸程上的阻抗。
- 2、在泵的吸入管路上不能布置凸起管路，这样会产生气阻，使泵空转，吸不上水甚至烧坏机械密封。
- 3、泵的入口管路的管径应大于或等于泵的吸入口径。
- 4、在泵的进出口应安装阀门，以便利与泵的维护和检修。
- 5、在泵开始运行时，入口应安装过滤器，待液体变清后过滤器可以撤掉，这样会保证泵的吸入口的通畅。



EDQ系列

EDQ series >>

结构特点：泵直接装在电机法兰上，机泵一体型，结构紧凑，节省安装空间。
Structural features: The pump is directly mounted on the motor flange. The pump is integrated and compact, saving installation space.

自吸达4米（20℃清水）（在泵腔内有水的条件下）
Self-priming up to 4 meters (20 ° C water) (with water in the pump chamber)

过流部件为304SS不锈钢（如需其它材质请注明）
The wetted parts are 304SS stainless steel (please specify if other materials are required)

机械密封：无压烧结碳化硅/碳化硅/氟橡胶
Mechanical seal: pressureless sintered silicon carbide / silicon carbide / fluoro rubber

使用条件：适用场所内无易爆易腐蚀的气体及蒸汽的屋内
Conditions of use: In the house where there is no explosive and corrosive gas and steam in the house

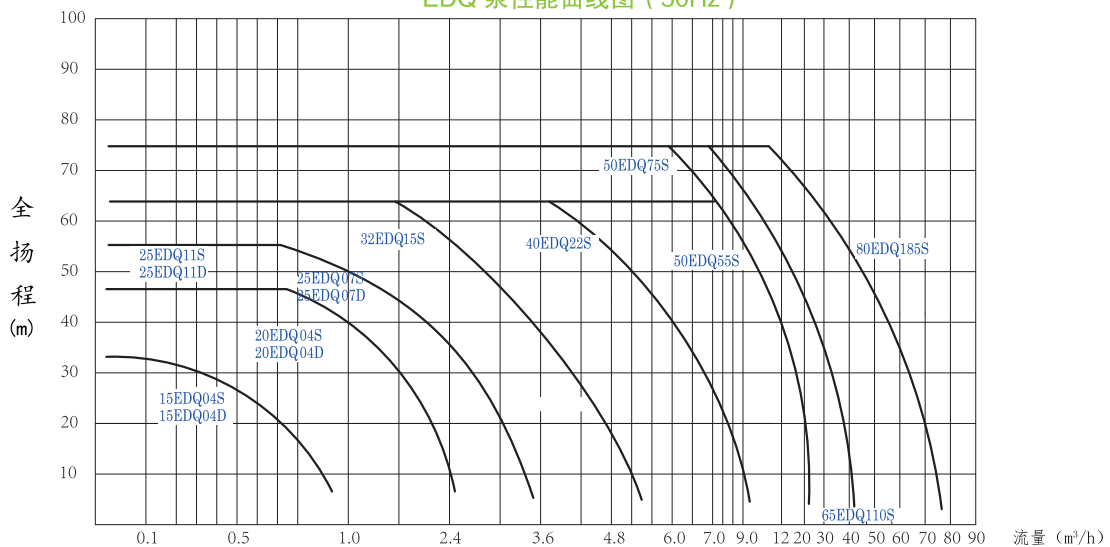
环境温度：-15℃~+40℃ 相对湿度Max90%，海拔1000米以下
Ambient temperature: -15 ° C ~ +40 ° C Relative humidity Max90%, altitude below 1000 meters

介质温度：-30℃~+90℃（如需更高温度请注明）
Medium temperature: -30 ° C ~ +90 ° C (if you need higher temperature, please specify)

适用介质：水、低黏度油、化学液体、冷媒、溶剂等
Applicable medium: water, low viscosity oil, chemical liquid, refrigerant, solvent, etc.

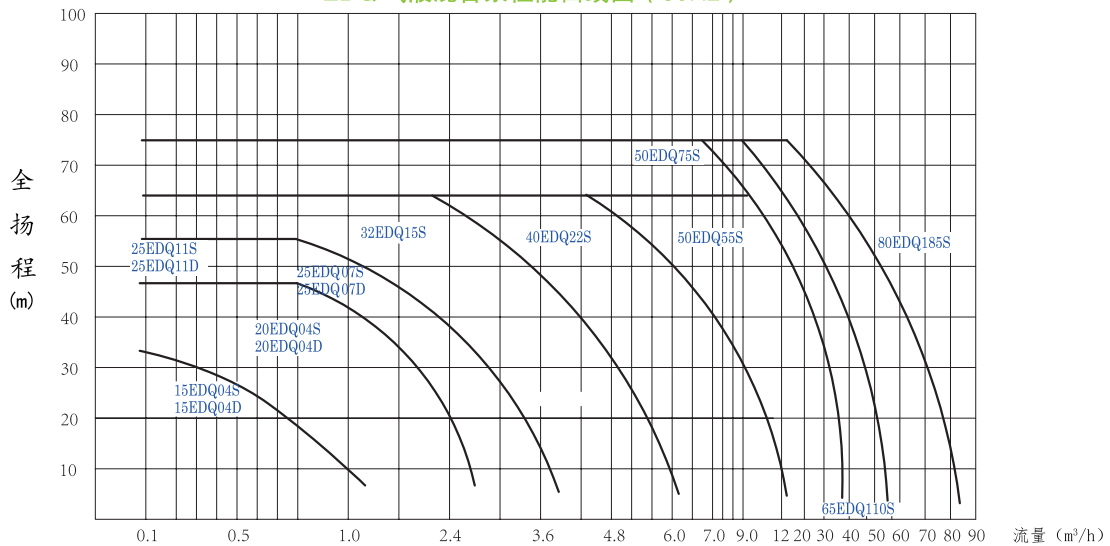
性能曲线图 / Performance graph

EDQ 泵性能曲线图 (50Hz)



如采用60Hz的电机，流量会增大20%。If a 60Hz motor is used, the flow rate will increase by 20%.

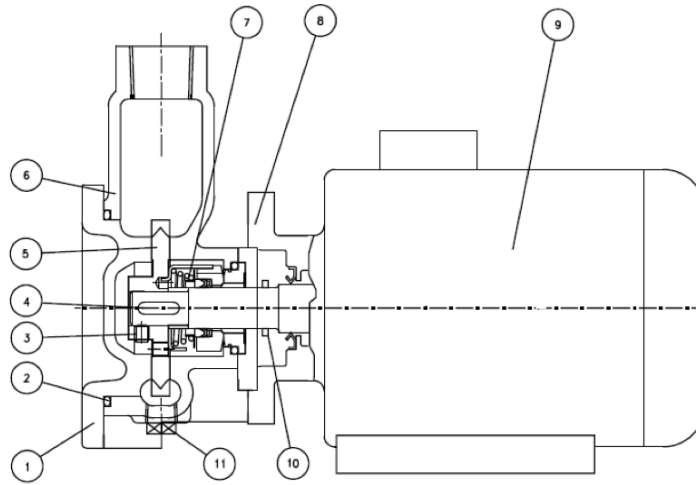
EDQ 气液混合泵性能曲线图 (60Hz)



EDQ 系列

EDQ series >>

结构图 / Structure diagram



标准配件材质 / Standard accessories material table

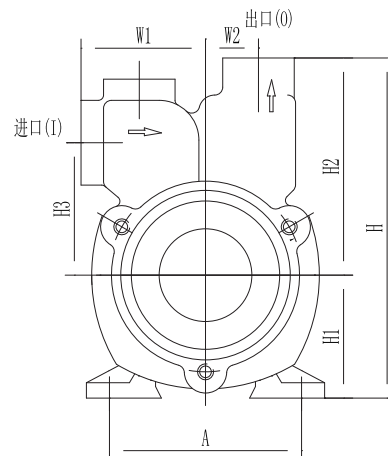
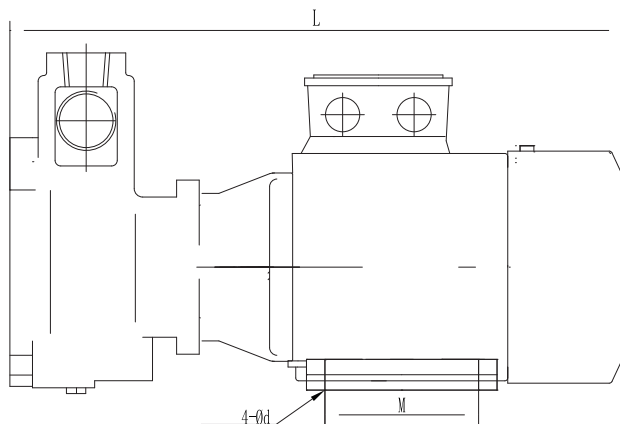
序号 SL	名称 Description	数量 Quantity	材质 Material	备注 Remark
1	泵盖 Pump cover	1	304SS	
2	O型圈 O-ring	1	FRM	
3	紧定螺丝 setting screw	2	316SS	
4	键和轴 key&shaft	1	304SS	
5	叶轮impeller	1	304SS	
6	泵体pump body	1	304SS	
7	机械密封 mechanical seal	1	无压碳化硅/t碳化硅/氟橡胶 Pressureless silicon carbide / t silicon carbide / fluoro rubber	
8	电机法兰Motor flange	1	cast iron	
9	电机 Motor	1	铝壳或铁壳Aluminum or iron shell	
10	挡水环Water retaining ring	1	NBR	
11	排水堵头Drain plug	1	304SS	

EDQ 系列

EDQ series >>

选型参数表 / Selection parameter list

电机一体式型号 (不带联轴器) Closed Couple Type	流量 Flow rate m ³ /h	功率 Power Kw	扬程 Head m	转速 Rotation Speed rpm	材质 Material	材质 Material	备注 Remark
15EDQ04S	0.3	0.55	30	2900	304SS	三相 three phases0.55	机械密封 Mechanical Seal
15EDQ04D	0.3	0.55	30	2900	304SS	单相 single phase0.55	机械密封 Mechanical Seal
20EDQ04S	1.0	0.55	40	2900	304SS	三相 three phases0.55	机械密封 Mechanical Seal
20EDQ04D	1.0	0.55	40	2900	304SS	单相 single phase0.55	机械密封 Mechanical Seal
25EDQ07S	2.0	0.75	40	2900	304SS	防爆 explosion proof0.55	机械密封 Mechanical Seal
25EDQ11D	2.0	1.1	40	2900	304SS	三相 three phases0.75	机械密封 Mechanical Seal
25EDQ11S	2.0	1.1	40	2900	304SS	单相 single phase0.75	机械密封 Mechanical Seal
25EDQ11B	2.0	1.1	40	2900	304SS	三相 three phases1.1	机械密封 Mechanical Seal
32EDQ15D	3.5	1.5	40	2900	304SS	防爆 explosion proof1.1	机械密封 Mechanical Seal
32EDQ15S	3.5	1.5	40	2900	304SS	三相 three phases1.5	机械密封 Mechanical Seal
40EDQ22S	6.0	2.2	40	2900	304SS	三相 three phases2.2	机械密封 Mechanical Seal
40EDQ30S	6.0	3.0	40	2900	304SS	三相 three phases3.0	机械密封 Mechanical Seal
50EDQ55S	12	5.5	40	2900	304SS	三相 three phases5.5	机械密封 Mechanical Seal
50EDQ75S	12	7.5	40	2900	304SS	三相 three phases7.5	机械密封 Mechanical Seal
65EDQ110S	25	11	40	1450	304SS	三相 three phases11	机械密封 Mechanical Seal
80EDQ185S	55	18.5	40	1450	304SS	三相 three phases18.5	机械密封 Mechanical Seal



备注: 如需要 316SS、316L、双相钢、钛材等材质, 请来电咨询!
Remarks: If you need 316SS, 316L, duplex steel, titanium and other materials, please contact us!

EDQ 系列

EDQ series >>

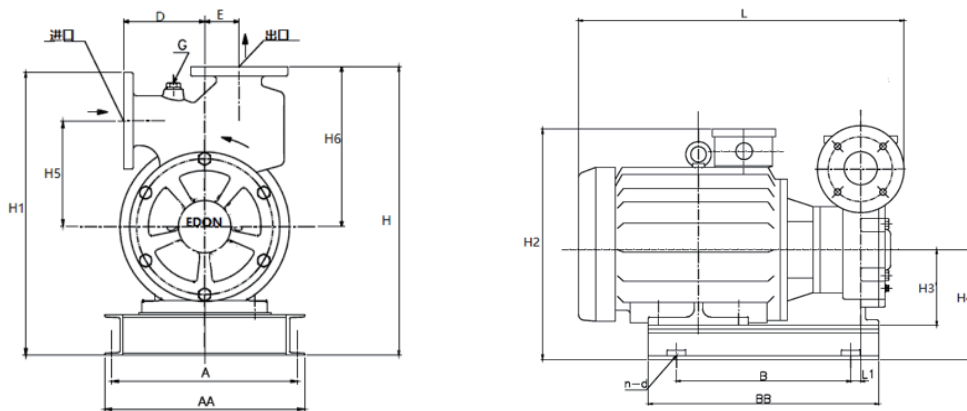
外形尺寸表 / Dimensions

型号 Model	I	O	H1	A	M	d	L	W1	W2	H3	H2	H	重量 Weight(Kg)	噪声 nois(Db)
15EDQ04S	Rc1/2	Rc3/8	71	100	90	8	300	45	21	52	79	150	10	59
15EDQ04D	Rc1/2	Rc3/8	71	100	90	8	300	45	21	52	79	150	10	59
15EDQ04B	Rc1/2	Rc3/8	71	100	90	8	300	45	21	52	79	150	10	59
20EDQ04S	Rc3/4	Rc1/2	71	112	90	8	310	50	25	63	99	170	12	61
20EDQ04D	Rc3/4	Rc1/2	71	112	90	8	310	50	25	63	99	170	12	61
20EDQ04B	Rc3/4	Rc1/2	71	112	90	8	310	50	25	63	99	170	12	61
25EDQ07S	Rc1	Rc3/4	80	125	100	9	335	60	28	70	110	190	16	63
25EDQ1D	Rc1	Rc3/4	80	125	100	9	335	60	28	70	110	190	16	63
25EDQ11S	Rc1	Rc3/4	80	125	100	9	335	60	28	70	110	190	16	63
25EDQ11B	Rc1	Rc3/4	80	125	100	9	335	60	28	70	110	190	16	63
32EDQ15S	Rc11/4	Rc1	90	140	125	10	390	65	35	80	125	215	20	65
32EDQ15D	Rc11/4	Rc1	90	140	125	10	390	65	35	80	125	215	20	65
40EDQ22S	Rc11/2	Rc11/4	90	140	125	10	400	70	40	85	135	225	22	65
40EDQ30S	Rc11/2	Rc11/4	90	140	125	10	450	70	40	85	135	225	25	65
50EDQ55S	DN50	DN40	135	210	140	12	515	112	45	106	195	330	66	65
50EDQ75S	DN50	DN40	135	210	140	12	515	112	45	106	195	330	68	65

型号 Model	功率 Power(Kw)	进口 Inlet	出口 Outlet	L	H	A	B	H5	H4	重量 Weight(Kg)	噪声 nois(Db)
65EDQ110S	11	DN65	DN50	750	520	360	410	170	255	200	70
80EDQ185S	18.5	DN80	DN65	850	575	380	550	180	275	280	70

一体式 65EDQ110S 和 80EDQ185S 泵外形尺寸图

Dimensional drawing of the Integrated 65EDQ110S and 80EDQ185S pumps



备注: 0EDQ55S/50EDQ75S/65EDQ110S/80EDQ185S 进出口都是法兰接口。
Remarks: 50EDQ55S/50EDQ75S/65EDQ110S and 80EDQ185S pump inlet and outlet are flange interfaces.